



PLH60 - Panther Light Duty Series Free-standing Hot Cupboard - Static - W 600 mm - 1.5 kW

The compact Panther Light Duty Series Hot Cupboard, which can also be used for warming plates, comes fully insulated for enhanced energy-efficiency, while there's also an adjustable thermostatic control to meet food safety regulations.

- ✔ Ideal for warming plates and for holding food safely and effectively at the desired temperatures
- ✔ Fully insulated for enhanced energy-efficiency
- ✔ Adjustable thermostatic control to meet food safety regulations
- ✔ Compact, space saving design

Specifications

Summary

| | |
|-----------------------------|-----------------------------------|
| Range Name | Panther |
| Power Type | Electric |
| Unit Type | Free-standing |
| Available in UK Only | No |
| UK Warranty | 2 Years Parts and Labour Warranty |
| Export Warranty | Contact your local dealer |
| GTIN Code | 5056105103653 |

Power and Performance

| | |
|-----------------------------|------------|
| Total Power kW | 1.5 |
| Temperature Range °C | 30 - 90 |
| IP Rating | IP24 |
| Plate Capacity | 240 |
| Temperature Control | Mechanical |

Key Specifications

| | |
|-----------------------------------|--------|
| Number of Shelves included | 3 |
| Number of Shelf Positions | 3 |
| Heated Base | Yes |
| Heated Gantry | No |
| Static or Mobile | Static |

Weights and Dimensions

| | |
|----------------------------------|-----|
| Unit Height (External) mm | 900 |
| Unit Width (External) mm | 600 |
| Unit Depth (External) mm | 600 |
| Height (Internal) mm | 700 |
| Width (Internal) mm | 555 |
| Depth (Internal) mm | 530 |
| Shelf Dimensions Width mm | 550 |
| Shelf Dimensions Depth mm | 530 |
| Net Weight Kg | 48 |

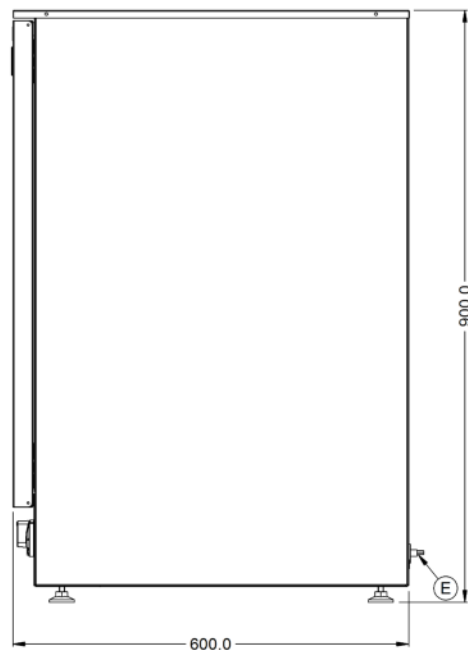
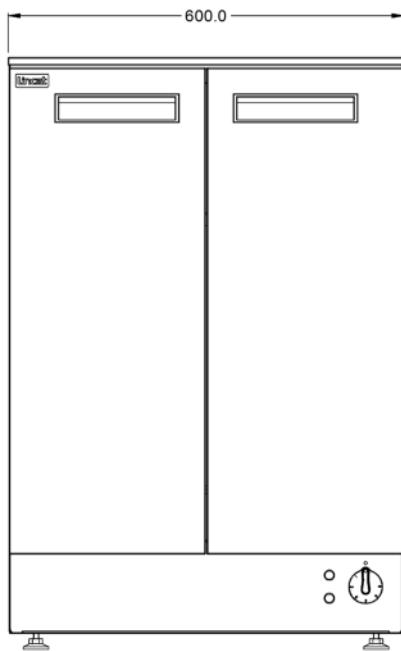
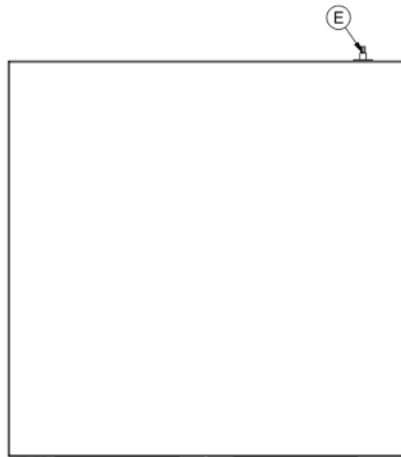
Supply Connections

| | |
|---------------------------------------|-------|
| Requires Installation | No |
| Requires Electrical Supply | Yes |
| UK 3 Pin Plug | Yes |
| Requires Hardwiring | No |
| Electrical Supply Rating Watts | 1,500 |
| Single Phase Amps | 6.5 |
| Single Phase Voltage | 230 |

Shipping

| | |
|-------------------------|-----|
| Packed Weight Kg | 60 |
| Packed Height cm | 110 |
| Packed Width cm | 78 |
| Packed Depth cm | 78 |

Technical Picture



Lincat Limited

Whisby Road,
Lincoln, LN6 3QZ,
United Kingdom

Company No: 2175448

A member company of



Customer Care

Tel: +44 1522 875500
Email: care@lincat.co.uk

Export Customers

Tel: +44 1522 503250
Email: export@lincat.co.uk

Opening Hours

Monday – Friday:
8.30am – 5pm